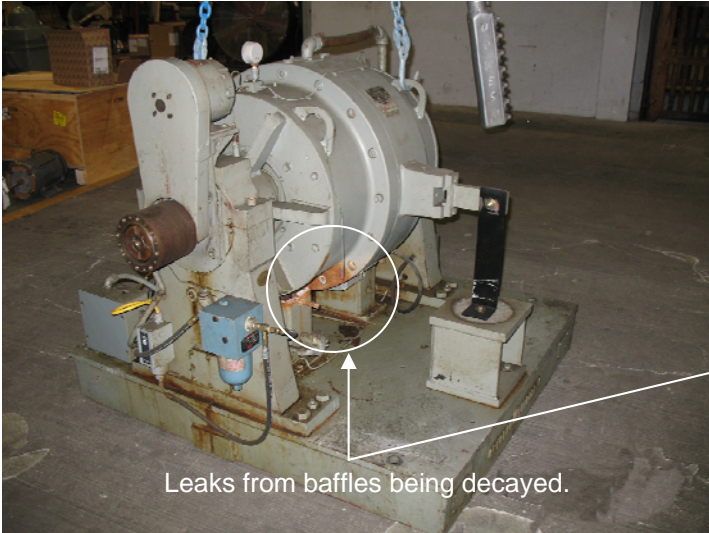
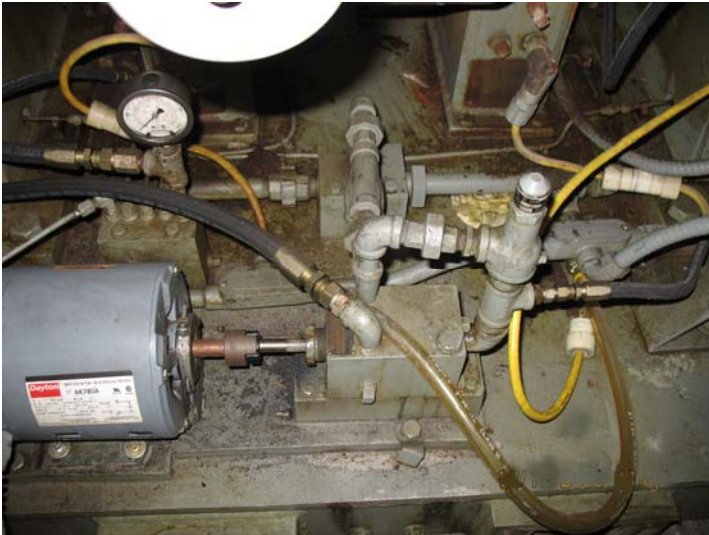


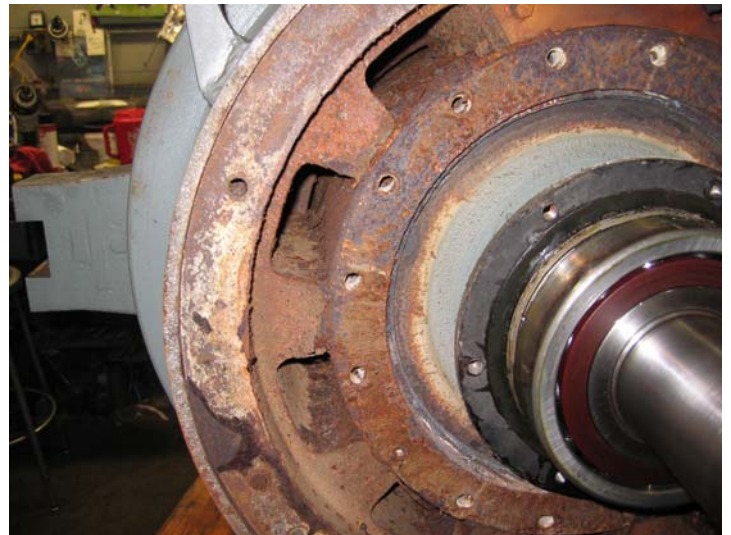
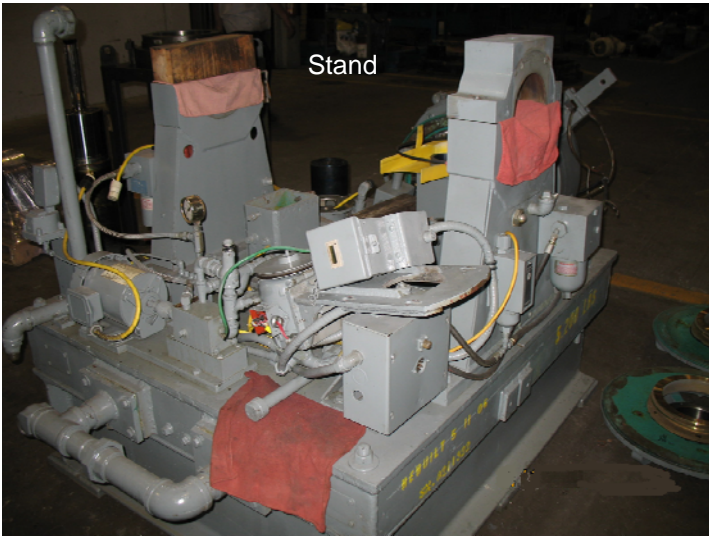
Condition when Received



Condition when Received



Disassembly



Disassembly



Disassembly



Down shot of end frame to main frame. Dust flaking off in massive amounts



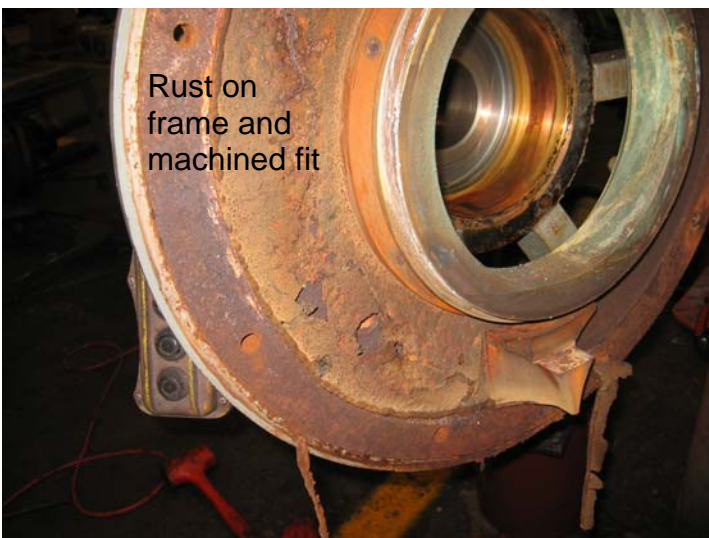
Missing coupling guard



Rotor in spider frozen by rust - Over 6 tons to get apart



Inside of end frame - heavy rust



Rust on frame and machined fit

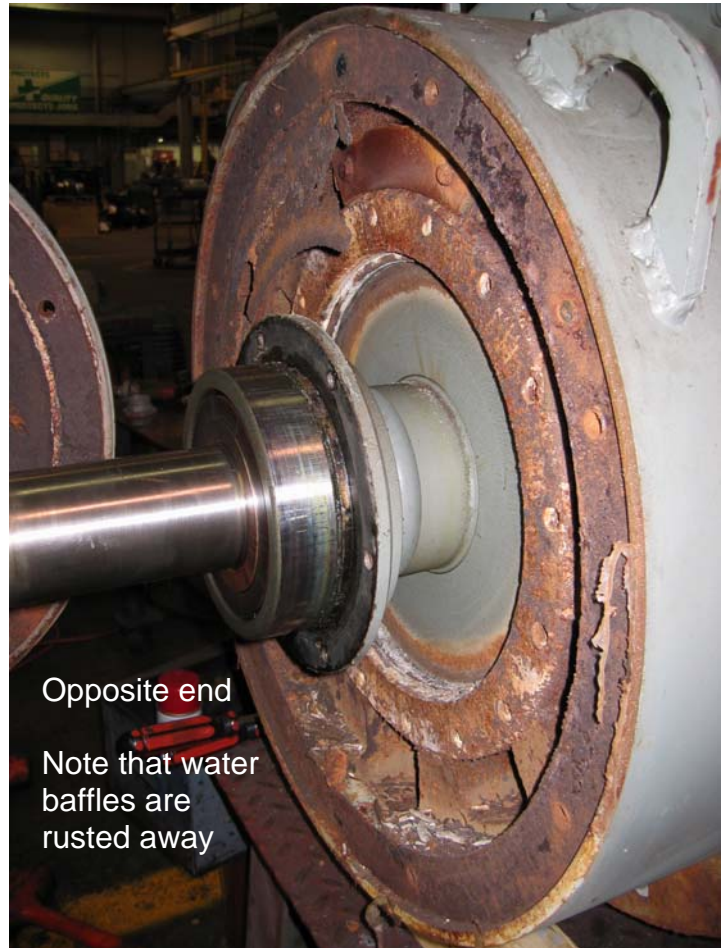


Rust on inside of end frame and machined fit

Disassembly



Note that water baffles are rusted away



Opposite end

Note that water baffles are rusted away



Baffles gone due to rust - new baffles are stainless steel



Parts rusted together



Rust around labyrinth rings causing water leaks

Repair Process



Repaired & Rebuilt Dyne